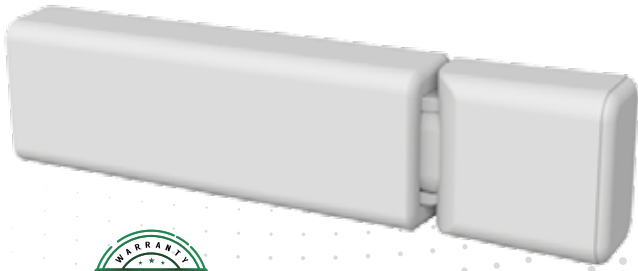


ENER-J®

Smart Home Living

Wireless Kinetic Door Contact Switch

No Wiring, No Batteries
needed. Easy Installation
& Usage.



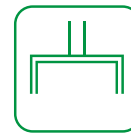
Self
Powered



No
Radiation



No
Maintenance



No
Wiring

SKU CODE:
WS1076

Model No:
DE1154

Ean Code on box:
5060774556405

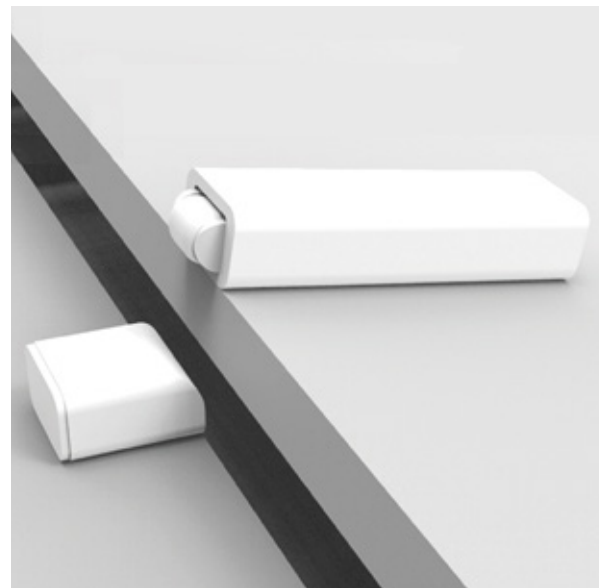
Packing

Inner Qty
1pc pack

Features:

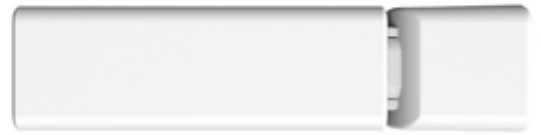
Our wireless door switch was designed for an easy trigger of lights when a door is opened or closed. Simply pair the door contact switch with our PRO Series wireless receiver, to control the lights inside the cabinets. Use with standard doors, sliding doors, drawers, etc

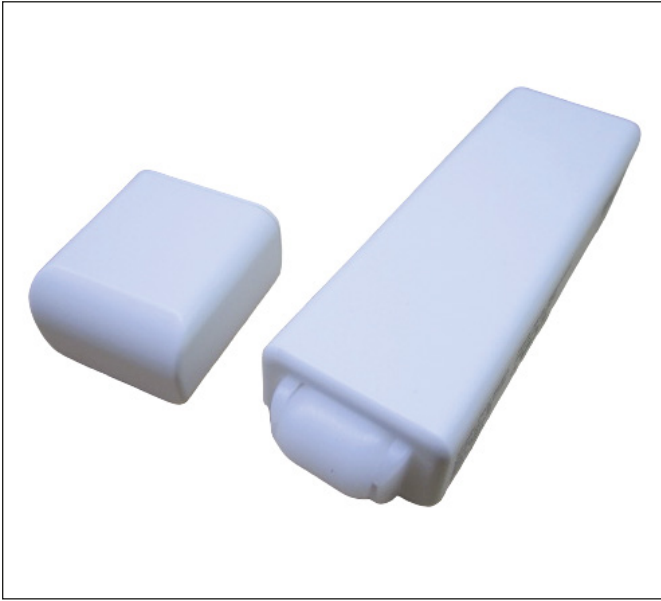
- **Power Source:** Micro energy acquisition and self-generating (no battery required).
- Low power hardware and highly reliable communication protocol
- **Control Distance*:** 25m (indoor).
- Pair with up to 6 Pro Range receiver Modules
- **Life Time:** =100000 times.
- **Installation method:** Double-sided adhesive paste installation



Technical Parameters

Power supply	Self-powered
Communication frequency	RF 433M
Modulation	FSK
Communication distance	80m (outdoor) 25m (indoor)
Service life	≥100000 times
Operating temperature	-20°C ~ +55°C
Shell material	PC
Installation method	Double-sided adhesive paste installation





Thank you for choosing ENER-J!

Customer satisfaction is our TOP priority, please let us know how you felt about your experience. Happy?

We are so happy that you are pleased with our product. Feel free to express your newfound joy! Share your experience by writing a review.

Not Happy? If you are not fully satisfied with the item you received, have any problems like damages, or questions, please contact us. We typically respond within 24-48 hours.

Stuck? Confused?

Contact our Technical Support team on:

T: +44 (0)1291 446 105 E: support@ener-j.co.uk

Lines are open Mon - Fri (8am to 4pm)